



# NZASE Science Network of Expertise

The New Zealand Association of Science Educators (NZASE) have been funded by the Ministry of Education as part of the Networks of Expertise initiative – to grow and develop existing and new curriculum, teaching and learning networks.

## The purpose of the funding is to:

- \* develop and grow a robust network that provides timely, on-going advice and guidance to build capability and adaptive expertise for teachers
- \* support national and regional initiatives aimed at providing peer to peer, collaborative support to teachers
- \* utilise and add to research and evidence that informs teacher practice
- \* undertake activities that promote linkages between the science education sector and the MOE to build shared knowledge and innovation to drive equity

**NZASE are working with Carmen Kenton and Sabina Cleary from Kaha Education to facilitate regional workshops and in the ongoing development of a sustainable digital science network.**

[carmen@kahaeducation.co.nz](mailto:carmen@kahaeducation.co.nz)

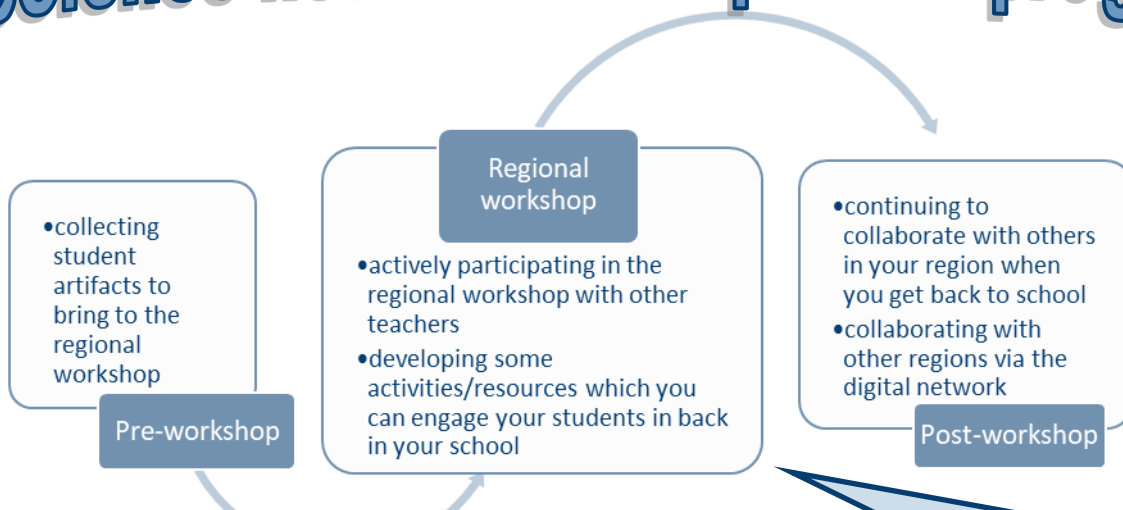
027 5242 333

[sabina@kahaeducation.co.nz](mailto:sabina@kahaeducation.co.nz)

027 5242 555

**KAHA  
EDUCATION**

## Science network of expertise programme



Locations and dates for 2019 workshops ; further details with registration information will be circulated soon.

NZASE Regional Branch	Workshop location	Date
Auckland (ASTA)	Auckland	Fri 22 March
Auckland (ASTA)	Auckland	Fri 9 August
Capital City (CCSE)	Wellington	Thur 13 June
Central (CASE)	Palmerston North	Tues 21 May
Christchurch (CSTA)	Christchurch	Tues 7 May
East Coast (ECSTA)	Napier	Wed 12 June
Nelson (NASE)	Nelson	Tues 13 August
Northland (CENTOS)	Whangarei	Thurs 8 August
Otago (OSTA)	Dunedin	Fri 5 April
Southland	Invercargill	Thur 4 April
Waikato	Hamilton	Thurs 21 March
West Coast	Greymouth	Wed 14 August

Participation in this programme will provide the chance to connect teachers of science in years 1-10 and provide the opportunity for them to share and collaborate.

Places in programme will be limited, and teachers from NZASE member schools will be given priority. There will be no charge for being part of the programme for teachers from NZASE member schools.

# Sustainable Digital Network

We are developing ongoing support for teachers via digital technologies. This will be integrated with the NZASE/NZST websites and will include:

- \* continually updated material relevant to teachers needs
- \* regular blogs
- \* opportunities for teachers to collaborate & share ideas and resources
- \* FAQs which will be regularly updated
- \* development of a science teacher database – so teachers can find other teachers in their area, or with similar interests, challenges etc
- \* continual links with NZASE/NZST website and regional/subject association websites

We aim to develop a digital network committee with least one representative per region on the committee as well as representatives from each of the standing committees. The digital network committee will meet and collaborate once a term (online) and they will be supported to connect with teachers in their area and nationally.

If you are interested in being on this committee please contact us!

***As with workshops, access to the online digital network will be free to NZASE members.***

The online support can provide links to other teachers and opportunities for resource and story sharing. The online network will be particularly beneficial to:

- teachers in regional areas of New Zealand often isolated by geography and being the only teacher of science in their school
- beginning science teachers, teachers from over-seas, and teachers teaching sciences outside their expertise
- experienced teachers who are newly appointed in leadership roles (formal and informal) and/ or responsible for mentoring other teachers
- experienced science leaders and teachers seeking to deepen their pedagogical understanding in the science learning area and keep abreast of current thinking in science education.

We need your input!

We invite you to participate in the NZASE Network of Expertise online survey. The survey is part of the development, monitoring and evaluation of the Network and seeks to understand the needs of science teachers across Aotearoa. The evidence generated through this survey will help to support decisions around the development of workshops and the digital network.

Click here to give your input: <https://tinyurl.com/NZASEnetwork>

