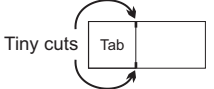
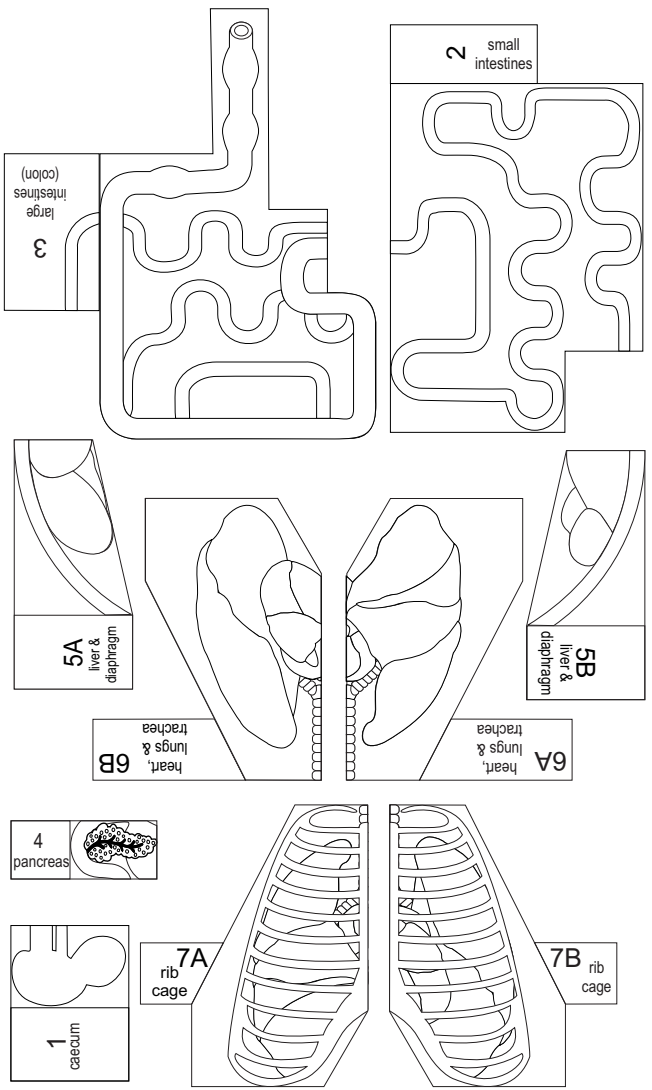


1. Colour in the sheet first then cut out as follows.
2. Cut out the Rat Rectangle and the Dissection Rectangle.
Cut along the solid dissecting line on the rat.
Slightly fold the rectangle in half to get the cut started
Fold back along the dotted lines.
3. Cut out the dissection parts below and make a tiny cut either end of the tabs then fold up.

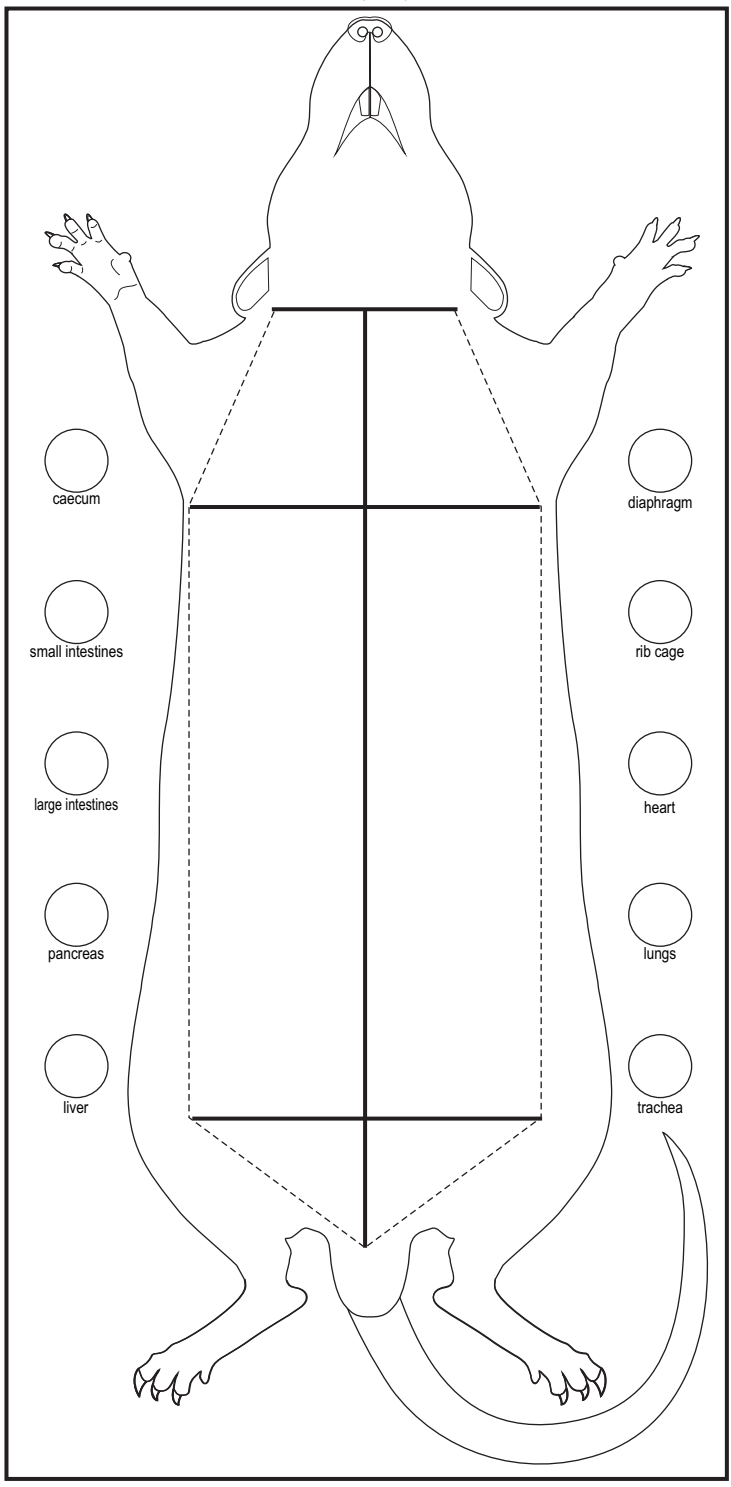


This makes apply glue to the underside of the tabs easier.
Glue the tabs to the matching numbers on the dissecting rectangle and flatten slightly

4. Glue around the outer edges of the dissection rectangle.
5. Stick the rat rectangle over the dissection rectangle.



RAT RECTANGLE



DISSECTION RECTANGLE

