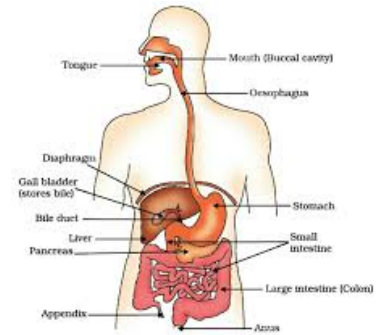


Digestive System Modelling - Year 10 GW



Task	Key Points
1. Mouth - use the mortar and pestle to grind up some food and drink, add saliva.	This mimics the teeth action in the mouth
2. Stomach - add the ground up food (bolus) into the chyme in the stomach. Add some stomach acid, mix well.	Stomach - labeled ice-cream container
3. Duodenum - add the stomach contents into the duodenum, add some bile and mix well.	Duodenum - labeled snaplock bag
4. Cut the corner of the duodenum bag then squeeze the chyme into the ' intestine '.	Intestines - pantyhose
5. Small Intestine - push the mixture through the intestine; make sure to squeeze out as much liquid into the body as possible.	Body - tote tray
6. Large Intestine/Colon - cut a hole in the toe of the 'colon' and squeeze out the stool into the stool receptacle.	Stool Receptacle - ice cream container
7. Tidy up and wash your hands.	

Y10 Technician notes

Food - use cocoa pops, rices, orange juice

Bile - green water

Stomach acid - vinegar

Chyme - 1 C oats soaked in 1 C water overnight- add 2 T baking soda just before use

Saliva - gelatin mixed in cold water to look frothy and gross!

