

Massey University School of Agriculture and Environment (SAE) Professional Development Day. For teachers of Agricultural and Horticultural Science.

Agenda

 [Click here to register](#)

Friday 20th September, 8.30am – 3.00pm, Massey University, Palmerston North Campus

SESSION 1

8.30 AM
–
9.05 AM

Teacher PD

Introductions and presentations in the Dairy 4 teaching room

- ✓ Massey University Scholarships available for your students
- ✓ Teacher PD opportunities

SESSION 2

9.05 AM
–
9.50 AM

Visit Current Research Projects

- ✓ Visit the whenua haumaru and catchment solutions project
- ✓ Plant Growth Unit – Horticulture
- ✓ Greenhouse gas capture

BREAK

9.50 AM – 10.10 AM: Morning tea break and networking

SESSION 3

10.10 AM
–
11.00 AM

Body Condition Scoring | Animal Science

- ✓ When and why it's done
- ✓ How it's done – both simulation and hands on practical

SESSION 4

11.00 AM
–
12.30 PM

Hands-on Activities for School Visits | AHC Labs

Split into groups and rotate through the Ag/Hort LABS. Each lab has 3 – 4 activities that can engage with. The practicals will be based around:

- ✓ Earth and Environmental Sciences
 - Environmental impacts – water quality, erosion and land use
- ✓ Agricultural and Horticultural Sciences
 - Pasture production – measuring pasture growth
 - Soil Science
- ✓ Animal Science and Agribusiness
 - Product attributes
 - Plant ID, Orchard
 - Wool practical – wool lab. How can wool be used in your classroom

BREAK

12.30 PM – 1.30 PM: Lunch break and networking: Catering from Wharerata

CONTINUED

1.30 PM – 2.30 PM: Continue with hands-on activities

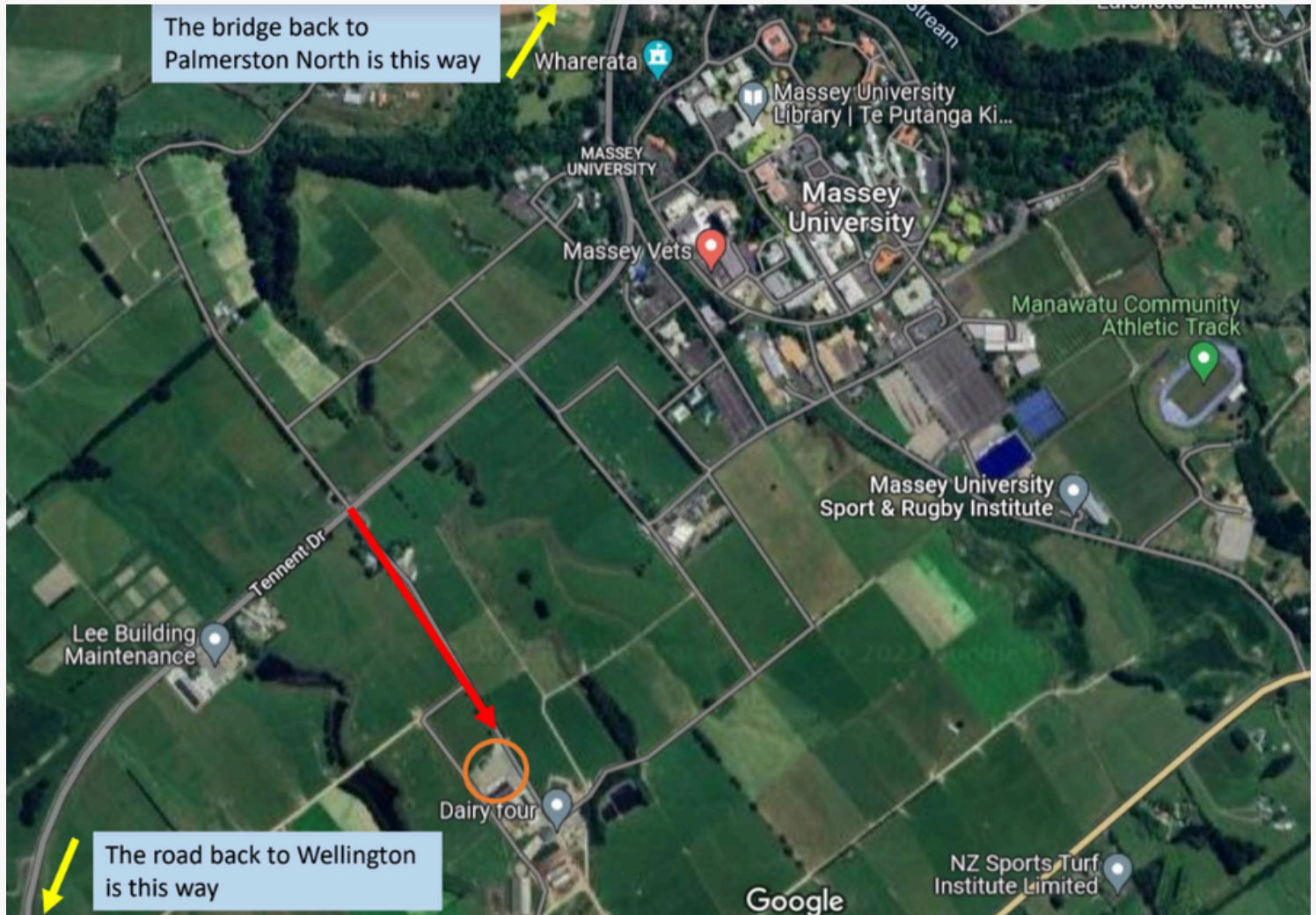
DEBRIEF

2.30 PM – 2.45 PM: Break and discussion (One of the AHC labs)

FINISH

2.45 PM – 2.55 PM: Return via van to your vehicle at Dairy 4 (Map on page 2).

Map | Dairy 4 Farm & Teaching Room



Arriving from Wellington (via highway 57): Follow the road sign to 'Palmerston North Massey University'; go past the large blue signs for 'Dairy 4', and 2 signs for 'Keeble Farm'. You'll also go around a sweeping bend to your right, and will see the large blue sign for 'Dairy 4 office'; turn into this driveway (follow the red arrow).

Arriving from Palmerston North: Drive past Massey campus. As you go up the hill and around a sweeping bend to your right, on your left you will see the large blue sign for 'Dairy 4 office'; turn into this driveway (follow the red arrow).

As you turn into Dairy 4, drive along the gravel road, go past the offices and down to the dairy complex (orange circle). We will meet you there.

DIRECTIONS FOR THE DAY

8.15 AM

Meet at Dairy 4 teaching room, free parking. Dairy 4 is located adjacent to the Massey University campus, Tennet Drive (SH57). approximately 5 km from Palmerston North City.