

Kia ora!

Well, we're into the 4th term of doing an hour of reading, writing and maths a day. Hope you are managing to fit in some science as well? Think of all the rich learning that goes on with some hands-on science! Be it a prompt for procedural or descriptive writing, reading an interesting connected series article on how bats 'hear' or measuring local rainfall and finding the average- it's so important to include hands-on science in the mix! Thinking current affairs - how about looking at the numbers from the [maritime disaster with The HMNZS Manawanui](#) that hit that reef and sunk in Samoan waters – compare them with e.g. measurements of your school field.

This term's newsletter includes some useful 'go to' science websites, ideas for camp, colours of an aurora, and PLD opportunities for 2025. Further ideas of how to integrate science into your literacy and maths programme are [found in previous newsletters – here](#).

Here are some excellent science websites tailored for primary teachers:

Science Learning Hub: This site offers a wealth of resources, including lesson plans, activities, interactives, articles and PD that connect Aotearoa New Zealand science with your classroom

[Science Alive](#) –explore this platform dedicated to science and technology. It offers nationwide events, engaging content, and educator-approved products to inspire all!

House of Science – a members platform that supports science kits that are booked on a library system

Explorify: Offers interactive activities that spark curiosity and encourage discussion among students. It's entirely free and includes activities like "Odd One Out" and "Zoom In, Zoom Out"

Schoolgen- Teacher designed learning activities and resources to get kaiako, tamariki and whānau enthused about STEM.

[CIEC \(Centre for Industry Education Collaboration\)](#): Connects real-world science with classroom learning through practical lessons and downloadable science booklets

[Royal Society of Chemistry:](#) Offers a wide range of resources for teaching material world, including lesson plans and interactive activities

[PHET Interactive Simulations](#): Features free simulations that allow students to engage directly with science concepts through interactive models

Twig Science Reporter: Brings the latest scientific news into the classroom in an engaging way with these videos

Plenty more out there but you might not have come across some of these 😊



Camp ideas

Here are some exciting science-related camp activities:

- **Ecosystem Wide Game:** This is a guaranteed hit! Have fun while learning about how an ecosystem works.
- **Citizen Science with Mm²:** If you're near a beach, consider participating in a citizen science project with Mm². It's a fantastic opportunity to contribute to scientific research.

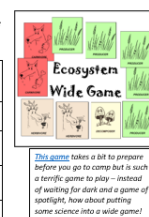


School Camp

Add some science into your programme!

There are some great ideas on the old EOTC site – TKI (Not transferred across to ~~TKI~~ yet)
Here are some examples: -

Build a tree	An experiential activity that aims to help the group to illustrate the structure and function of a tree and the relationships between different parts of a tree and living things (includin
North arrow on the sun	Finding direction with the sun involving numerical observation, and problem solving skills.
North arrow on the sun	Use star charts to identify stars and learning how to use the Southern Cross to find south involving numerical, observational, and problem solving skills.
Observation skills	Develops students' observation skills. Develops students' problem solving skills. Students are being aware of the surroundings and where they live (locality).
Colour fish on the fish	An experiential game based on Placemats. Placemats are a type of add-on tag to illustrate (predatory or herbivorous relationships).
Treasure hunt	An activity involving spending time in the outdoors. Learning what is happening and working together to achieve a task and finding answers.



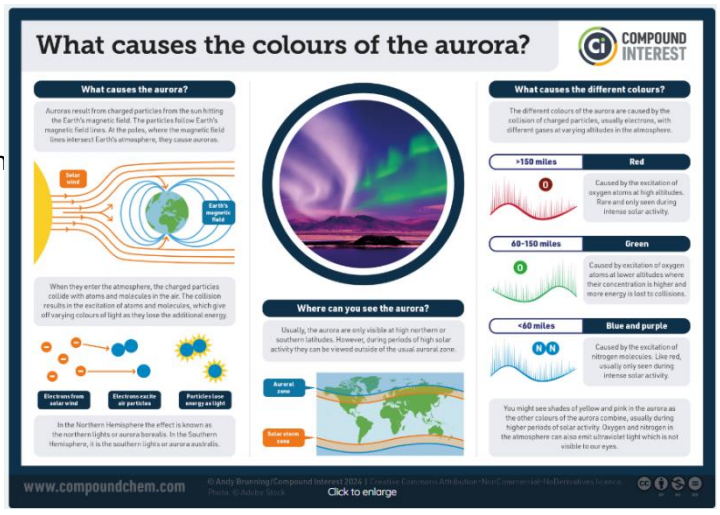
Mm² have some great resources on their [Primary School Resources](#) page too! (They have updated their site so you may need to reregister!)



What causes the colours of the aurora?

Usually, the aurora is only visible closer to the poles than where most of us live. However, due to solar storms as solar activity hits a maximum, there've been recent months where it's been visible much further away.

If you've been lucky enough to spot them, [here's a graphic explaining what causes the different colours!](#)



PLD Opportunities

NZASE Primary Science PLD - **Term 4** NZASE is excited to be offering free NEX funded Primary Science workshops. If you or your team would like support please email greta.dromgool@waikato.ac.nz and include what you would like help with and when you are available to meet.

[School to Skies / School to Seas Teachers Camp](#) - a live-in camp that will be held at both RNZN Devonport Naval Base and RNZAF Base Auckland in Auckland, over the period of 19 – 24 January 2025. You will be notified within a week of applications closing if you have been successful, reserved, or unsuccessful in your application.

Applications close on the 17th of October 2024.



NZAPSE is a branch of the New Zealand Association of Science Educators (NZASE). Our role is to support science in Primary Schools and enhance the teaching and learning of science at primary level. NZAPSE runs an annual Primary Science Week, Week 3 Term 2. Other ways to be updated is to keep an eye on [NZ Primary Science Teachers](#) fb page and [our website](#) (currently being updated)



NZASE

You can become a [member by filling in this form](#) **Free membership for Primary Schools** – sign you and/or your school up today!

