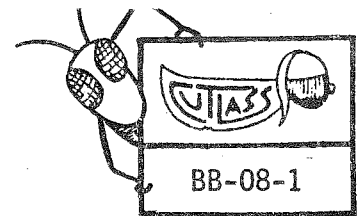


# INSECTS

## 1 Introducing Insects

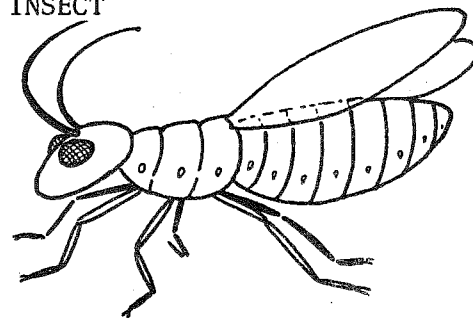


- There are 3 parts to the body of an insect; a HEAD, then a THORAX, and an ABDOMEN at the end.
- All insects have 6 LEGS. These are on the thorax.
- On the head there are 2 EYES and 2 FEELERS.
- They have a SKELETON on the outside of their body.
- There are BREATHING HOLES along both sides of the abdomen.
- Most insects have WINGS. These are joined to the thorax.



- ➔ You should now be able to label the parts on this insect.
- ➔ When you have done this, cut out the diagram and glue it into your book.

PARTS OF AN INSECT



## 2 A Genuine Insect

- ➔ Get a large insect - such as a grasshopper, cricket, weta or cockroach. (Ask your teacher for one if you cannot get your own.)
- ➔ Look carefully at your insect. Try to find all the main parts.
- ➔ Draw a large diagram of this insect. (Use pencil.) Label your diagram.

## 3 Recognizing Insects

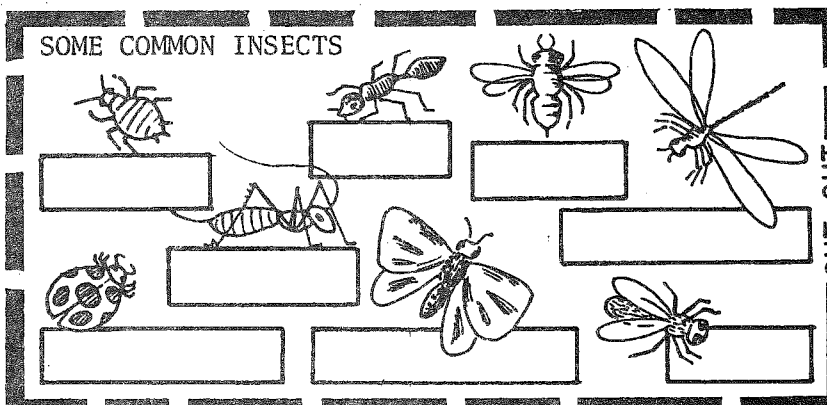
There are many different insects. Some common ones are drawn below.

The names for these are in this box but they are scrambled up.

BRAYDIDL	SAWP
WAET	NAGYDROLF
TRUTYFLEB	LYF
HADIP	TAN

- ➔ Unscramble the names, and write each name under the correct insect.

SOME COMMON INSECTS



- ➔ Cut out this box. Glue it into your book.

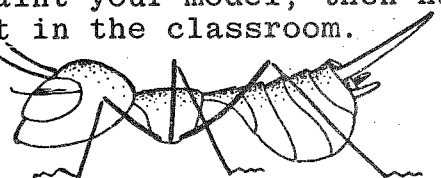
## 4 Models

- ➔ Make a model of an insect.
- ➔ You can invent a really strange beast - but it must have the main features of an insect.
- ➔ You could make your model out of:

- plasticine and pipe cleaners.
- cardboard and plastic straws.
- wire and papier mâché.
- wire and polystyrene.

Your art teacher could have other ideas.

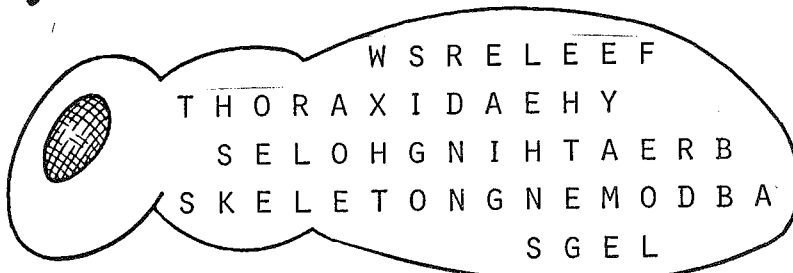
- ➔ Paint your model, then hang it in the classroom.



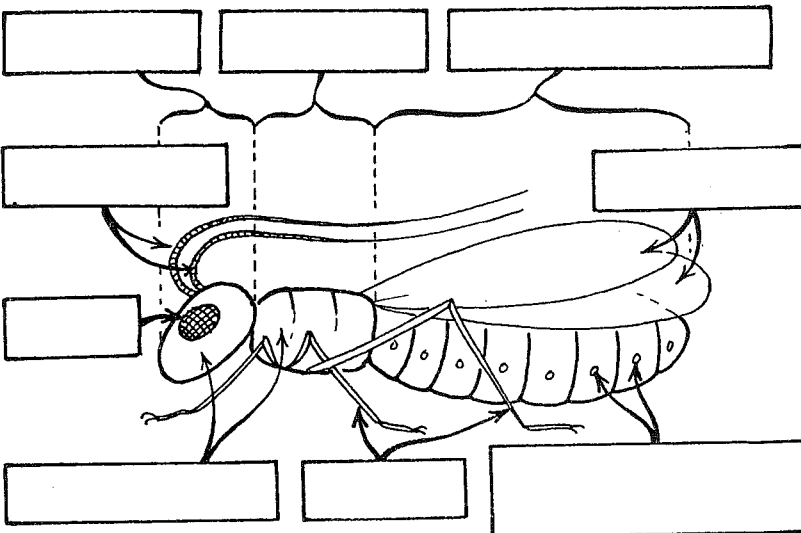
# INSECTS CHECK-TEST

NAME \_\_\_\_\_

(a) There are 9 names hidden in this puzzle.



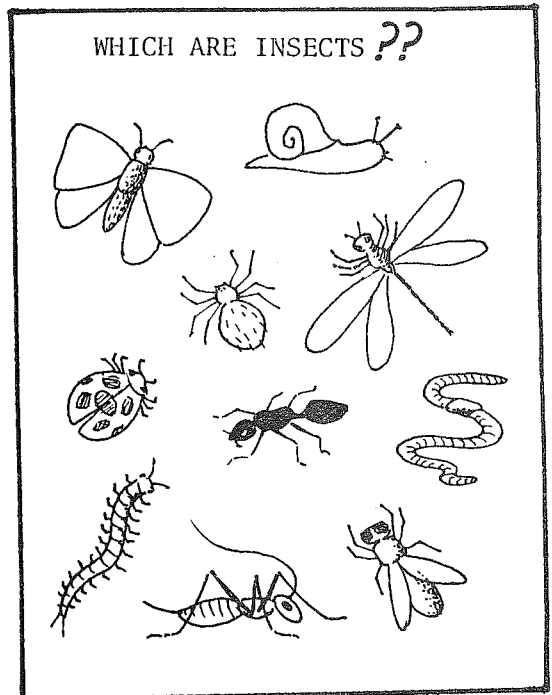
→ Find the 9 names and use them to label this drawing of an insect.



CUT AND GLUE

(b) Not all the animals shown in this box are insects.

→ Put a circle around the animals that are insects.



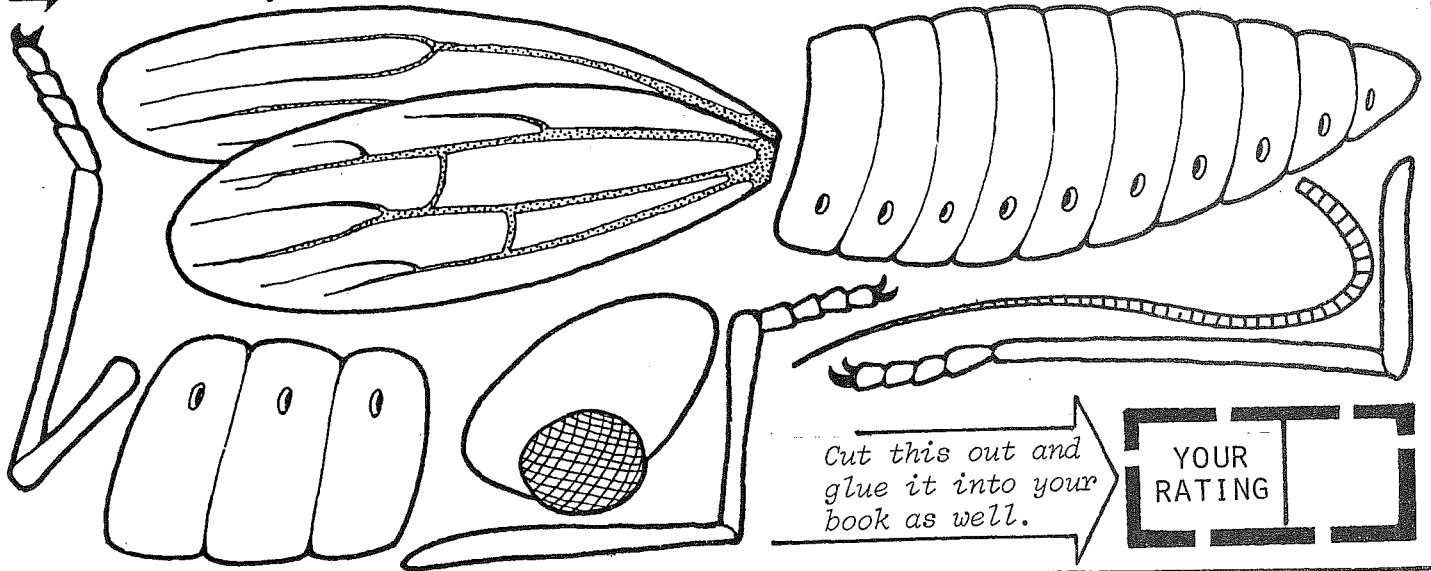
YOUR  
RATING

# INSECTS CHECK-TEST

→ Cut out the insect parts drawn below.

→ Arrange them in the right way, then glue them into your book.

→ Colour in your insect and label the main parts.



Cut this out and  
glue it into your  
book as well.

YOUR  
RATING

# INSECTS

BB-08-3



## CUTLASS ACTIVITY SHEET TEACHERS' GUIDE

### AIM OF ACTIVITY SHEET

To make students aware of the basic characteristics of insects.

(A BASIC SHEET)

### OBJECTIVES

After completing this activity sheet, students should be able to:

- list the basic characteristics of insects.
- name the main parts of an insect.
- describe the functions of these parts.
- draw a diagram of an insect.
- name some common insects.

### MATERIALS REQUIRED

- Scissors and glue.
- Large insects for students to draw. (Probably easier if dead insects are used.)
- Handlens. (Optional.)
- Material for model making. (See Section 4 for details.)

### EXTENSION WORK SUGGESTIONS

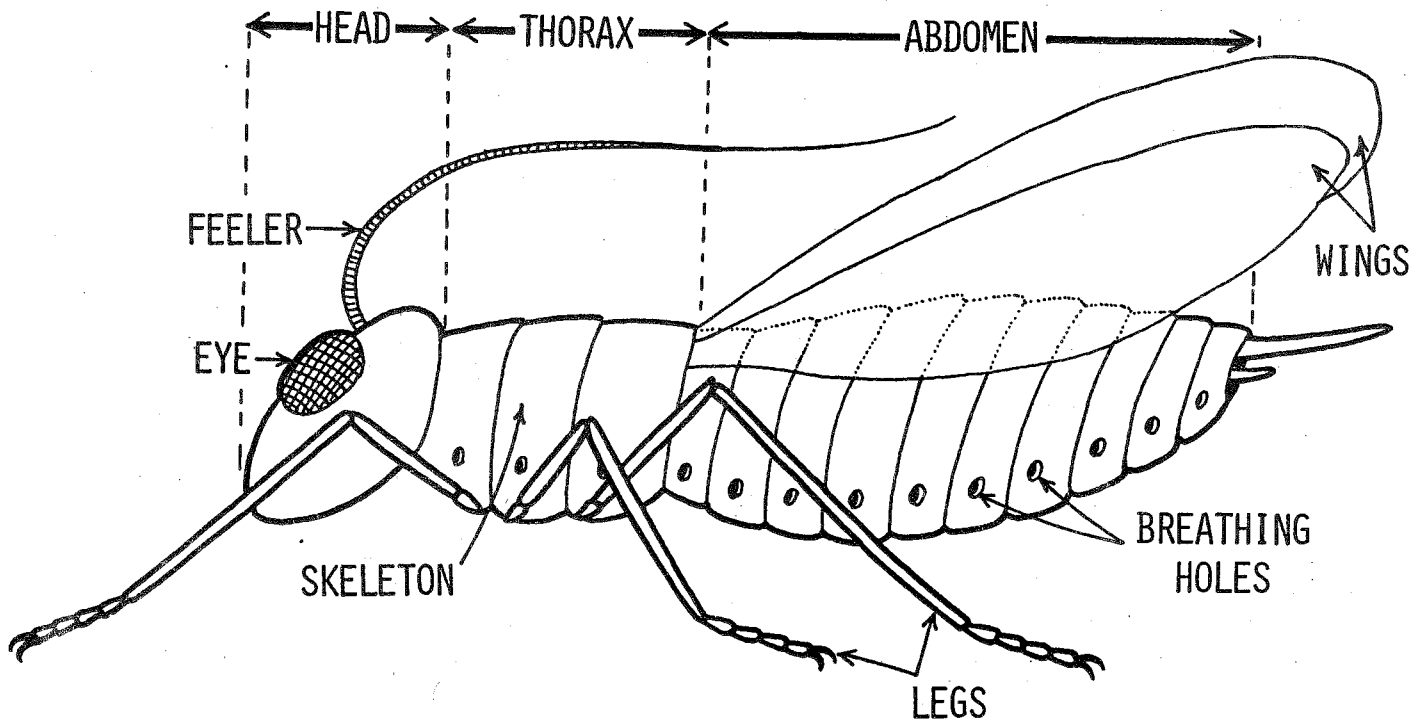
- Look at insects, or parts of insects (eg wings, eyes, legs) under a microscope.
- Project work:
  - Useful and harmful insects.
  - Control of insects.
  - How insects feed.
  - The life of social insects.
  - Types of insect life histories.
- Design a fly trap.
- Trap nocturnal insects with a light trap.
- Make an insect collection.
- Carry out consumer tests on fly sprays (eg determine effectiveness, value for money, smell, etc).
- Keep insects and study their life histories. Students keep a record of progress, describe each stage and note duration of the stages. (Monarch butterflies, blowflies, or mosquitoes could be studied.)

### RESOURCES

- CUTLASS OHP Transparency:  
*The Insect Plan.*

### ADDITIONAL NOTES

# the insect plan



## CHARACTERISTICS OF INSECTS

ALL INSECTS HAVE ....

- ~ 6 LEGS WITH JOINTS.
- ~ A BODY IN 3 PARTS - HEAD, THORAX AND ABDOMEN.
- ~ A SKELETON ON THE OUTSIDE OF THE BODY = EXOSKELETON.
- ~ A PAIR OF EYES = COMPOUND EYES.
- ~ A PAIR OF FEELERS = ANTENNAE.
- ~ BREATHING HOLES ALONG EACH SIDE OF THE BODY.
- ~ WINGS - MOST INSECTS HAVE TWO PAIRS OF WINGS (eg bees)
  - SOME INSECTS HAVE ONE PAIR OF WINGS (eg flies)
  - SOME INSECTS HAVE NO WINGS (eg wetas)